

QDEK®

roofing adhesive



9000

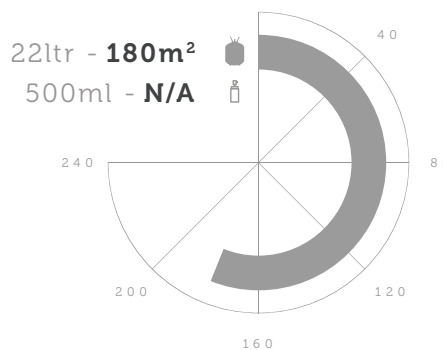
SELF ADHESIVE MEMBRANE PRIMER FOR KINGSPAN OPTIM-R® PANELS

QDEK® 9000 is a solvent based primer based on synthetic rubber and resins, and is specifically designed for use with all Kingspan OPTIM-R® Roofing System Insulation. QDEK® 9000 Surface Primer can be applied to metallic substrates, bituminous materials, wood based materials, and insulation boards. QDEK® 9000, once applied to the roof deck, is dry within 1-2 minutes, and can be walked on without transfer to the soles of safety boots.

BENEFITS

- Works with all Self adhesive PVC, TPO and Bituminous Membranes.
- EPS compatible.
- Non-MECL.
- Walk on primed surface immediately.

SQUARE METRE COVERAGE (m²):



APPLICATION TYPE:



2 sided

OPEN TIME*:



30 mins

FLASH-OFF TIME**:



2 mins

SPRAY TYPE:



Web Spray

GUN TYPE:

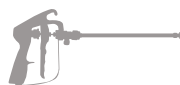


Detail Gun

HOSE TYPE:



4m Black Rubber



Field Gun



8m Black Rubber

COLOUR:

● Black

TECHNICAL DATA:

Shelf Life	18 Months
Appearance	Black
Temperature Resistance	-30°C to 90°C
Solvent System	Non-chlorinated
Coverage	70 - 90m ²
Solids	28% - 33%
VOC Content	574 grams per litre
Storage	5°C-25°C

DIRECTIONS FOR USE

- This product is designed to be applied to the roof deck. For best results, the temperature of the adhesive and the surfaces being bonded should be between 60 °F - 80 °F (16 °C - 27 °C).
- Use with adequate ventilation. When possible we recommend shaking the canister well before using.
- Attach and secure hose tightly onto the spray gun with required tip. Attach the other end of the hose onto the canister. Make sure the hose-valve connections are securely tight. Open the valve on the canister slowly and fully, check for leaks during this process. Unlock the trigger on the spray gun to start spraying.
- Prior to use, check compatibility by spraying a small test patch of the primer on the substrate. This product may degrade some substrates.



1. Make sure that surfaces are clean, dry and free from dirt, dust, oil, loose paint, wax or grease, etc.



2. Spray about 10-20 cm (4" – 8") away at a 90 degree angle to the surface, with 50% overlaps applying a uniform, even coat of adhesive to obtain 80% to 100% coverage of the surface. If necessary, spray another coat of primer in areas that appear to need more primer.



3. Allow 2 minutes for the primer to tack off until no primer transfers to the knuckle when touched.

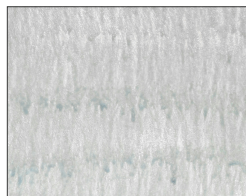
4. Adhere surfaces and press together with adequate pressure. A roller is recommended to apply a uniform pressure to achieve maximum strength. Allow 24 hours for the adhesive to fully cure.

5. If the spray tip clogs, unscrew the spray tip from the gun and clean with solvent such as lacquer thinner or acetone. Do not use a pin on the spray tip.

COVERAGE



COVERAGE TOO LIGHT



COVERAGE TOO HEAVY



CORRECT APPLICATION = 40 dry gms/sqm

CANISTER STORAGE/CHANGE OVER

Turn valve on canister into the off position, spray out remaining adhesive left in the hose, disconnect the spray hose and gun from the canister. Reconnect the spray hose to a canister of cleaning solvent (sold separately) and spray out until liquid is clear which indicates that the hose and gun is clean. If you choose to leave the hose and spray gun on the canister, leave the valve on the canister open. Do not disconnect the hose/gun from the canister. Close and lock the spray gun.

HANDLING & STORAGE

- Consult Material Safety Data Sheet prior to use.
- DO NOT store at temperatures over 50°C.
- Avoid exposure to direct sunlight.
- DO NOT store directly on concrete floor.
- For optimum performance, store at 18°C during use, but must always be above 10°C.
- When connected, keep valve open and hose pressurised at all times.
- DO NOT close valve until ready to connect to new cylinder.
- Release pressure in hose before disconnection.
- Always test product to determine suitability for your particular application prior to use in production.

Copyright © 2019 by Quin Global UK Ltd
All rights reserved. This publication or any portion thereof may not be reproduced or used in any manner whatsoever without the express written permission of the publisher. Printed in the UK

*Kingspan, OPTIM-R are Registered Trademarks of the Kingspan Group plc in the UK, Ireland and other countries. All rights reserved.