

# QDEK<sup>®</sup>

roofing adhesive



## 2352

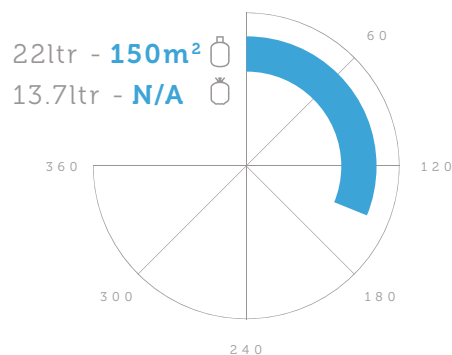
### NC FLEECE-BACKED SINGLE SIDED FIELD AREA ADHESIVE

QDEK<sup>®</sup> 2352 is a non-chlorinated, polyurethane spray adhesive, designed to be applied single sided to the roof deck only. It has been specifically designed for bonding all fleecebacked single ply membranes including TPO/FPO, EPDM and PVC, to various roof decks such as insulation boards, concrete, plywood, cementitious boards and existing asphalt/bituminous surfaces. QDEK<sup>®</sup> 2352 sprays in a unique snowflake spray pattern, designed to give a slight foaming effect to droplets on the surface so that the adhesive keys with the fleece or scrim backing in the membranes for optimum adhesion performance.

#### BENEFITS

- 100% waterproof.
- Structural curing bond line.
- Non-Chlorinated solvent (NC).
- Compatible with all fleeceback membranes.

#### SQUARE METRE COVERAGE (m<sup>2</sup>):



#### APPLICATION TYPE:



1 sided

#### OPEN TIME\*:



20 mins

#### FLASH-OFF TIME\*\*:



1 - 2 mins

#### SPRAY TYPE:



Snowflake Spray

#### GUN TYPE:



Field Gun

#### HOSE TYPE:



4m PU MB/HT

#### COLOUR:



Red

#### TECHNICAL DATA:

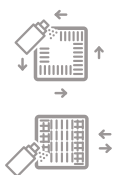
Shelf Life	9 Months
Appearance	Red
Temperature Resistance	-30°C to 140°C
Solvent System	Non-chlorinated
Coverage	150m <sup>2</sup>
Solids	66% - 70%
VOC Content	Less than 160 grams per litre
Storage	5°C-25°C

**DIRECTIONS FOR USE**

- This product is designed to be applied to the roof deck. For best results, the temperature of the adhesive and the surfaces being bonded should be between 60 °F - 80 °F (16 °C - 27 °C).
- 
- Use with adequate ventilation. When possible we recommend shaking the canister well before using.
- 
- Attach and secure hose tightly onto the spray gun with required tip. Attach the other end of the hose onto the canister. Make sure the hose-valve connections are securely tight. Open the valve on the canister slowly and fully, check for leaks during this process. Unlock the trigger on the spray gun to start spraying.
- 
- Prior to use, check compatibility by spraying a small test patch of the adhesive on the substrate. This product may degrade some substrates.



1. Make sure that surfaces are clean, dry and free from dirt, dust, oil, loose paint, wax or grease, etc.



2. Spray about 15 - 30 cm (6" - 12") away at a 45 degree angle to the surface, applying a uniform, even coat of adhesive to obtain 60% to 80% coverage of the surface. If necessary, spray another coat of adhesive in areas that appear to need more adhesive.



3. Allow 1 - 2 minutes for the adhesive to tack off, make sure to apply membrane within 10 minutes of applying adhesive.

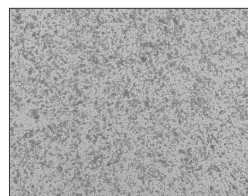


4. Adhere surfaces and press together with adequate pressure. A roller is recommended to apply a uniform pressure to achieve maximum strength. Allow 24 hours for the adhesive to fully cure



5. If the spray tip clogs, unscrew the spray tip from the gun and clean with solvent such as lacquer thinner or acetone. Do not use a pin on the spray tip.

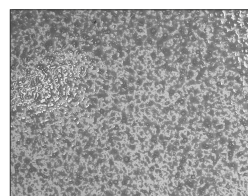
**COVERAGE**



COVERAGE TOO LIGHT



COVERAGE TOO HEAVY



CORRECT APPLICATION = 50 dry gms/sqm

**CANISTER STORAGE/CHANGE OVER**

Turn valve on canister into the off position, spray out remaining adhesive left in the hose, disconnect the spray hose and gun from the canister. Reconnect the spray hose to a canister of cleaning solvent (sold separately) and spray out until liquid is clear which indicates that the hose and gun is clean. If you choose to leave the hose and spray gun on the canister, leave the valve on the canister open. Do not disconnect the hose/gun from the canister. Close and lock the spray gun.

**HANDLING & STORAGE**

- Consult Material Safety Data Sheet prior to use.
- DO NOT store at temperatures over 50°C.
- Avoid exposure to direct sunlight.
- DO NOT store directly on concrete floor.
- For optimum performance, store at 18°C during use, but must always be above 10°C.
- When connected, keep valve open and hose pressurised at all times.
- DO NOT close valve until ready to connect to new cylinder.
- Release pressure in hose before disconnection.
- Always test product to determine suitability for your particular application prior to use in production.

Copyright © 2019 by Quin Global UK Ltd  
 All rights reserved. This publication or any portion thereof may not be reproduced or used in any manner whatsoever without the express written permission of the publisher. Printed in the UK.